



From the
Anvil

2 From the Anvil



The restoration of an old property is a project requiring attention to detail. Cottages, farmhouses, period townhouses and barn conversions all have individuality and character that deserve to be preserved. Many crafts that were practised so widely a century or more ago, such as thatching, stone-walling and forging are now less in evidence or have been replaced by modern production methods.

All of the items in the collection 'From The Anvil' shown here have been drawn and hand forged in the traditional fashion, and the designs are faithful reproductions of the best in English blacksmithing. These classic designs continue to be in great demand because of their timeless appearance and functionality and are ideally suited for listed and period properties.

Each fitting is given a beeswax finish ensuring a long lasting authentic patina and is individually handmade adding a unique charm to any property.





33228



33230



33158



33147L



33206



33126



33181



33207



33150



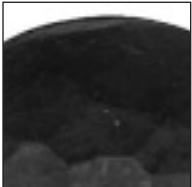
33101



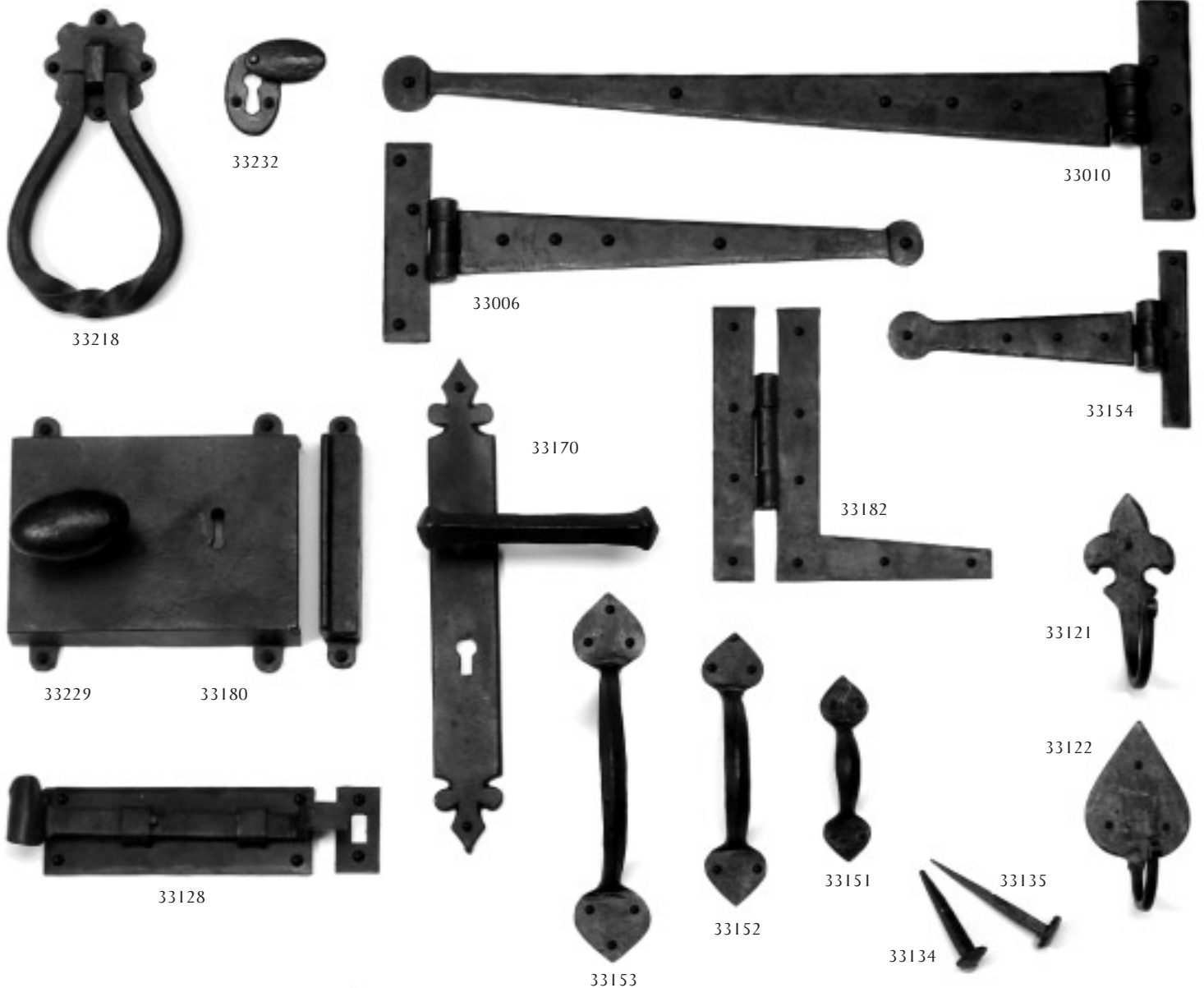
33217

- 33228 Octagonal Mortise Knob Set
- 33230 Round Mortise Knob Set
- 33158 Arrow Head Hinge 18" (pair)
- 33206 Arrow Head Hinge 12" (pair)
- 33207 Arrow Head Hinge 6" (pair)
- 33147L Cottage Latch (LH)
- 33147R Cottage Latch (RH) *(also available)*

- 33126 Door Bolt 6" Str.
- 33181 H Hinge 7" (pair)
- 33150 Gothic Thumbblatch
- 33101 Medium Bean Thumbblatch
- 33217 Ring Door Knocker 5"



4 Door furniture



33218 Pear Shaped Door Knocker

33232 Oval Escutcheon & Cover

33231 Oval Escutcheon *(also available)*

33010 T Hinge 18" (pair)

33184 T Hinge 15" (pair) *(also available)*

33006 T Hinge 12" (pair)

33204 T Hinge 9" (pair) *(also available)*

33154 T Hinge 6" (pair)

33229 Oval Mortise/Rim Knob Set

33180 Rim Lock & Cast Iron Cover

33170 Tudor Lever Lock Set

33171 Tudor Lever Latch Set *(also available)*

33172 Tudor Euro Lock Set *(also available)*

33182 HL Hinge 7" (pair)

33128 Door Bolt 6" Crk

33153 Gothic D Handle 8"

33152 Gothic D Handle 6"

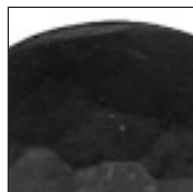
33151 Gothic D Handle 4"

33134 Handmade Nails 2"

33135 Handmade Nails 3"

33121 Fleur de Lys Hook

33122 Gothic Hook





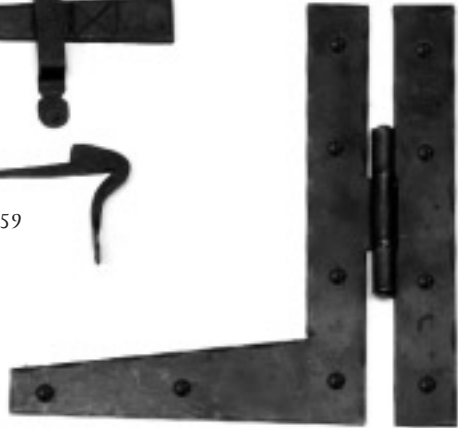
33209



33159



33210



33183



33189



33190



33157 33156 33161



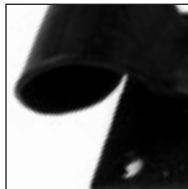
33169 33168



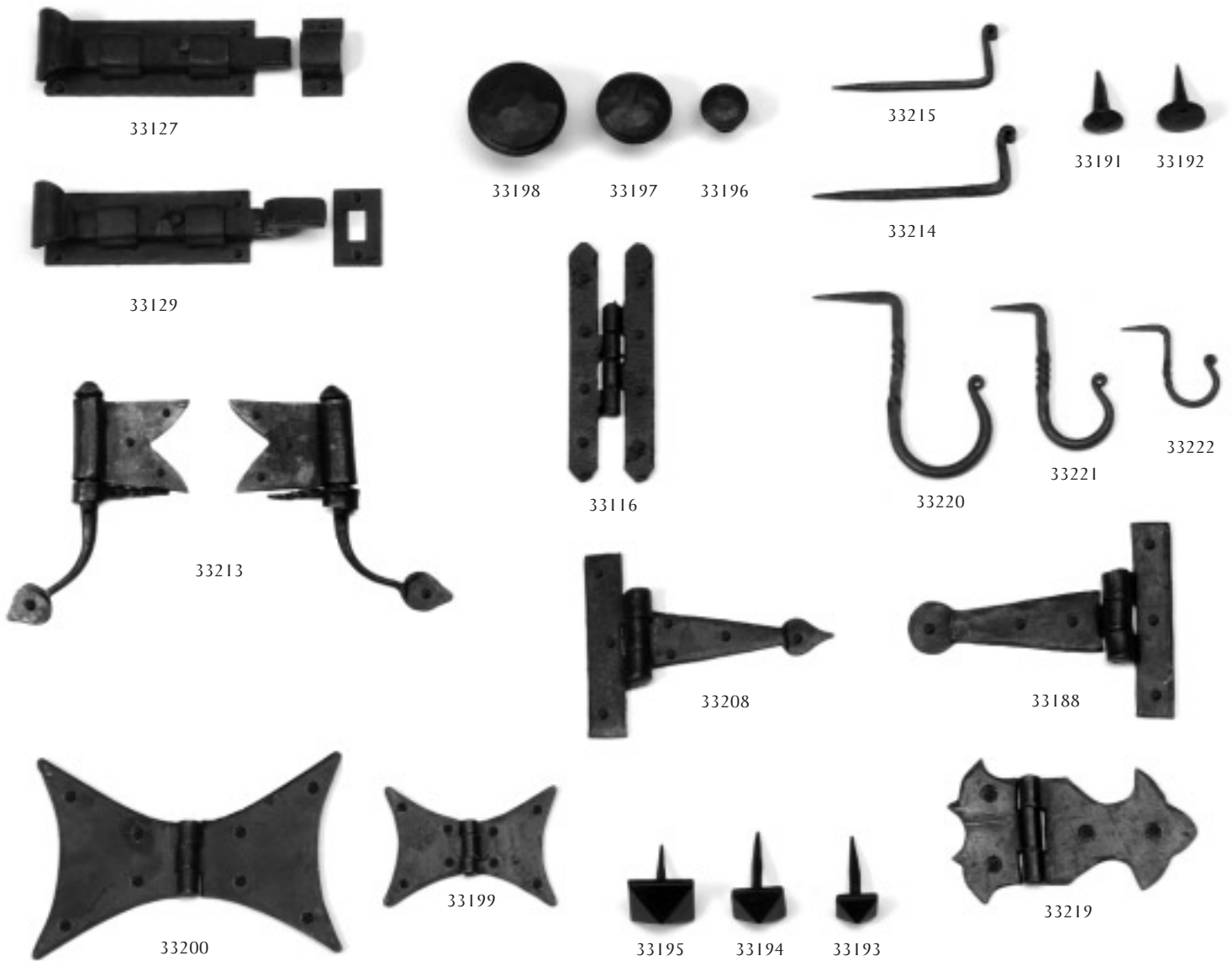
33160

- 33209 Letter Plate 12 3/4" x 4 1/4"
- 33210 Letter Plate Cover
- 33226 Letter Plate - powder coated *(also available)*
- 33227 Letter Plate Cover - powder coated *(also available)*
- 33159 Heavy Bean Thumblatch
- 33183 HL Hinge 9" (pair)
- 33189 24" Hook & Band Hinge + Plate (pair)

- 33190 Spike Pin for 24" Hook & Band Hinge (pair)
- 33157 Small Keep-cast
- 33156 Medium Keep-cast
- 33161 Large Keep-cast
- 33169 Bean D Handle 6"
- 33168 Bean D Handle 4"
- 33160 Latch Set



6 Cabinet furniture



33127 Cupboard Bolt 4" Str.
33129 Cupboard Bolt 4" Crk.

33198 40mm Beaten Cupboard Knob
33197 30mm Beaten Cupboard Knob
33196 20mm Beaten Cupboard Knob

33215 L Hook 2 1/2"
33214 L Hook 3"

33191 15mm dia. Round Head Nail 1" spike
33192 20mm dia. Round Head Nail 1" spike

33213 Shutter Hinge (pair)

33116 H Hinge 4" (pair)

33220 Cup Hook 3"
33221 Cup Hook 2"
33222 Cup Hook 1.5"

33208 Arrow Head Hinge 4" (pair)

33188 T Hinge 4" (pair)

33200 3" Butterfly Hinge (pair)
33199 2" Butterfly Hinge (pair)

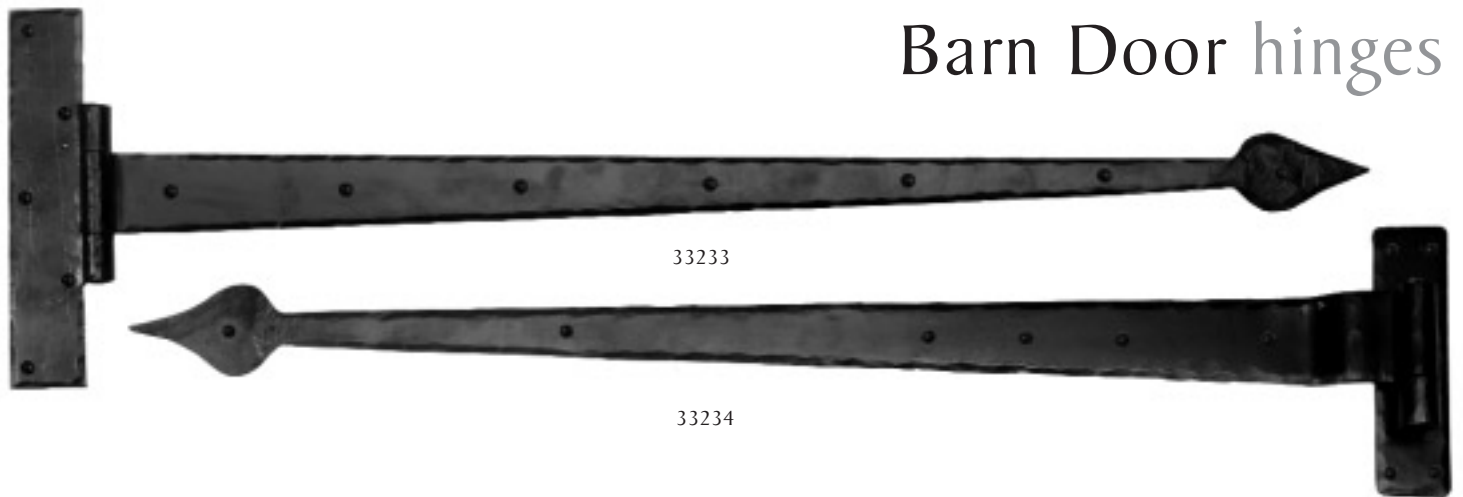
33195 25mm Pyramid Door Stud - p.coat.
33194 20mm Pyramid Door Stud - p.coat.
33193 15mm Pyramid Door Stud - p.coat.

33219 Ornate Hinge (pair)





Barn Door hinges



33187 Monkeytail Stay 10"
33205 Monkeytail Stay 8"

33185 Monkeytail Fastener LH
33186 Monkeytail Fastener RH *(also available)*

33212 Monkeytail Locking Fastener R/H
33211 Monkeytail Locking Fastener L/H *(also available)*

33223 Pear Drop Stay 10"
33235 Pear Drop Stay 8" *(also available)*

33236 Pear Drop Fastener

33233 Barn Door T Hinge 36" - powder coated (pair)

33234 Barn Door Hook & Band Hinge 36" - powder coated (pair)



8 Window furniture – Cast



33149



33144



33141



33143



33148



33139



33140



33142

Rosehead nails



28330



28332



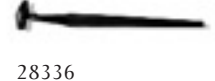
28335



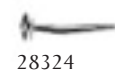
28327



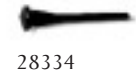
28325



28336



28324



28334

33149 Pear Drop Stay 12"
33141 Pear Drop Stay 10"
33148 Pear Drop Stay 8"

33144 Monkeytail Stay 12"
33143 Monkeytail Stay 10"
33139 Monkeytail Stay 8"

33140 Pear Drop Fastener
33237 Fastener Hook
33142 Monkeytail Fastener

28324 Rosehead Nails 25mm (1 kg)
28325 Rosehead Nails 40mm (1 kg)
28332 Rosehead Nails 50mm (1 kg)
28327 Rosehead Nails 65mm (1 kg)
28330 Rosehead Nails 75mm (1 kg)

28334 Rosehead Nails 25mm Black Oxide (1 kg)
28336 Rosehead Nails 50mm Black Oxide (1 kg)
28335 Rosehead Nails 65mm Black Oxide (1 kg)

ANVIL 2008 Price List

All prices are + vat

| Item No | Description | Cost £ | Page | Item No | Description | Cost £ | Page |
|---------|---|--------|------|---------|---|--------|------|
| 28325 | Rosehead Nails 1 1/2" (1kg) | 19.90 | | 33171 | H/Made Tudor Lever Lock Latch B/Wax | 50.60 | 4 |
| 28337 | Rosehead Nails 1 1/2" (1kg) B/O | 19.90 | | | | | |
| 28336 | Rosehead Nails 2" (1kg) B/O | 19.90 | 8 | 33172 | Tudor Euro Lock P/Coat 92mm Centre | 50.60 | 4 |
| 28335 | Rosehead Nails 2 1/2" (1kg) B/O | 19.90 | 8 | 33180 | H/Made Rim Lock & Cast Iron Cover | 43.38 | 4 |
| 28338 | Rosehead Nails 3" (1kg) B/O | 19.90 | | 33181 | H/Made H Hinge 7" (pair) B/Wax | 21.30 | 3 |
| 33002 | Maintenance Wax 100ml | 4.80 | | 33182 | H/Made HL Hinge 7" (pair) B/Wax | 28.27 | 4 |
| 33006 | H/Made T Hinge 12" B/Wax (pair) | 22.29 | 4 | 33183 | H/Made HL Hinge 9" (Pair) B/Wax | 32.67 | 5 |
| 33010 | H/Made T Hinge 18" B/Wax (pair) | 28.38 | 4 | 33184 | H/Made 15" T Hinge (Pair) B/Wax | 25.34 | 4 |
| 33011 | H/Made T Hinge 22" B/Wax (pair) | 32.56 | | 33185 | H/Made M/T Fastener LH | 10.25 | 7 |
| | | | | 33186 | H/Made M/T Fastener RH | 10.25 | 7 |
| | | | | 33187 | Monkey Tail Stay 10" | | |
| 33012 | H/Made T Hinge 22" B/Wax (pair) PC | 32.56 | | 33188 | H/Made T Hinge 4" (pair) B/Wax | 12.78 | 6 |
| 33101 | H/Made Medium Beanthumb latch | 28.38 | 3 | 33189 | 24" Hook & Band Hinge (Pair) B/Wax | 70.40 | 5 |
| 33101XL | Medium Bean Thumb Latch 5" THB BAR | 30.58 | | 33190 | Spike Pin For 24" Hook & Band Hinge (pair) | 22.00 | 5 |
| 33116 | H Hinge 4" (Pair) | | | 33191 | 1" R/Head Nail 5/8" Nail Dia Head | 0.33 | 6 |
| 33121 | H/Made Fleur De Lys Hook | 5.96 | 4 | 33192 | 1" R/Head Nail 3/4" Nail Dia Head | 0.42 | 6 |
| 33122 | H/Made Gothic Hook | 5.96 | 4 | 33193 | Pyramid Door Stud 1" x 1" (15mm) P/Coat | 1.23 | 6 |
| 33126 | H/Made Door Bolt 6" Straight | 17.38 | 3 | 33194 | Pyramid Door Stud 3/4" x 3/4" (20mm) P/Coat | 1.58 | 6 |
| 33126R | H/Made Receiver Plate for 6" STR Bolt | 2.31 | | 33195 | Pyramid Door Stud 5/8" x 5/8" (25mm) P/Coat | 1.89 | 6 |
| 33127 | H/Made Cupboard Bolt 4" Straight | 12.10 | 6 | 33196 | Beaten Cupboard Knob 3/4" x 3/4" (20mm) | 3.39 | 6 |
| 33127R | H/Made Receiver Plate for 4" STR Bolt | 1.98 | | 33197 | Beaten Cupboard Knob 1 1/4" x 1 1/4" (30mm) | 4.55 | 6 |
| 33128 | H/Made Door Bolt 6" Cranked | 20.90 | 4 | 33198 | Beaten Cupboard Knob 1 1/2" x 1 1/2" (40mm) | 6.25 | 6 |
| 33128R | H/Made Receiver Plate For 6" Bolt CRK | 1.65 | | 33199 | H/M Butterfly Hinge 2 3/4" x 1 3/4" (pair) | 11.88 | 6 |
| 33129 | H/Made Cupboard Bolt 4" Cranked | 14.08 | 6 | 33200 | H/M Butterfly Hinge 4 3/4" x 3 1/4" (pair) | 15.84 | 6 |
| 33129R | H/Made Receiver Plate for 4" Bolt CRK | 1.21 | | | | | |
| 33134 | H/Made Nail 2" x HD Dia 3/4" B/Wax (each) | 0.53 | 4 | 33201 | H/Made Frame Keep P/Coated | 3.30 | |
| 33135 | H/Made Nail 3" x HD Dia 1" B/Wax (each) | 0.66 | 4 | 33202 | H/Made Staple Pin B/Wax | 3.48 | |
| 33139 | Monkeytail Stay 8" B/Wax | 11.31 | 8 | 33203 | Frame Keep Pin B/Wax | 3.48 | |
| 33140 | Pear Drop Fastener B/Wax | 10.87 | 8 | 33204 | H/Made T Hinge 9" (pair) | 18.52 | 4 |
| 33141 | Pear Drop Stay 10" B/Wax | 11.53 | 8 | 33205 | Monkey Tail Stay 10" | | |
| 33142 | Monkeytail Fastner B/Wax | 10.87 | | 33206 | Arrow Head Hinge 12" (pair) | 22.29 | 3 |
| 33143 | Monkeytail Stay 10" B/Wax | 11.53 | 8 | 33207 | Arrow Head Hinge 6" (pair) | 14.76 | 3 |
| 33144 | Monkeytail stay 12" B/Wax | 13.60 | 8 | 33208 | Arrow Head Hinge 4" (pair) | 12.78 | 6 |
| | | | | 33209 | Letter Plate 12 3/4" B/Wax | 23.10 | 5 |
| 33147L | H/Made Cottage Latch LH B/Wax | 52.80 | 3 | 33210 | Letter Plate Cover B/Wax | 18.70 | 5 |
| 33147R | H/Made Cottage Latch RH B/Wax | 52.80 | | 33211 | H/Made LKG M/T Fastener L/H | 12.45 | 7 |
| 33148 | Pear Drop Stay 8" B/Wax | 11.31 | 8 | 33212 | H/Made LKG M/T Fastener R/H | 12.45 | 7 |
| 33149 | Pear Drop Stay 12" B/Wax | 13.60 | 8 | 33213 | Shutter Hinge B/Wax (pair) | 16.50 | 6 |
| 33150 | H/Made Gothic Thumb Latch | 28.38 | 3 | 33214 | H/Made L Hook 3" B/Wax | 2.09 | 6 |
| 33150XL | Gothic Thumbblatch / 5" Thumb Bar | 30.58 | | 33215 | H/Made L Hook 2 1/2" B/Wax | | |
| 33151 | H/Made Gothic D Handle 4" | 5.02 | 4 | 33217 | Ring Door Knocker 5" B/Wax | 39.60 | 3 |
| 33152 | H/Made Gothic D Handel 6" | 8.23 | 4 | 33218 | Pear Shaped Door Knocker B/Wax | 35.20 | 4 |
| 33153 | H/Made Gothic D Handle 8" | 11.22 | 4 | 33219 | Ornate Hinge 3 3/4" x 2 1/4" (pair) B/Wax | 8.76 | 6 |
| 33154 | H/Made T Hinge 6" (pair) B/Wax | 14.76 | 4 | 33220 | H/Made Cup Hook 3" B/Wax | 2.09 | 6 |
| 33156 | Medium Keep B/Wax | 4.84 | 5 | 33221 | H/Made Cup Hook 2" B/Wax | 1.87 | 6 |
| 33157 | Small Keep B/Wax | 3.96 | 5 | 33222 | H/Made Cup Hook 1 1/2" B/Wax | 1.65 | 6 |
| 33158 | H/Made Arrow Head Hinge 18" (pair) | 28.38 | 3 | 33223 | Pear Drop Stay 10" | | |
| 33159 | H/Made Heavy Bean Thumb Latch | 31.42 | 5 | 33224 | LKG M/T ESPAG Waxed RH | 16.73 | |
| 33160 | H/Made Latch Only Set | 14.81 | 5 | | | | |
| 33161 | Large Keep B/Wax | 6.16 | 5 | 33225 | LKG M/T ESPAG Waxed L/H | 16.73 | |
| 33167 | H/Made Bean D Handle 8" | 8.80 | | 33226 | 12 3/4" Letter Plate P/Coated | 19.82 | 5 |
| 33168 | H/Made Bean D Handle 4" | 6.73 | 5 | 33227 | 13 3/8" Letter Plate Cover P/Coated | 16.5 | 5 |
| 33169 | H/Made Bean D Handle 6" | 8.98 | 5 | 33228 | Octagonal Waxed Mort/Rim Set | 25.96 | 3 |
| 33170 | H/Made Tudor Lever Lock B/Wax | 50.60 | 4 | 33229 | Oval Waxed Mort/Rim Set | 20.35 | 4 |

| Item No | Description | Cost £ | Page | Item No | Description | Cost £ | Page |
|---------|---|--------|------|----------|----------------------|--------|------|
| 33230 | Round Waxed Mort/Rim set | 20.35 | 3 | 33256 | Sprung Unit Cassette | 13.00 | |
| 33231 | H/Made Oval Escutcheon | 2.86 | 4 | 18299/4" | Heavy Duty Latch 4" | 7.40 | |
| 33232 | H/Made Oval Escutcheon & Cover | 3.96 | 4 | 18299/3" | Heavy Duty Latch 3" | 7.40 | |
| 33233 | Barn Door T Hinge 36" (pair) P/Coated | 92.40 | 7 | | | | |
| 33234 | Barn Door Hook & Band 35" Hinge (pair) P/C | 92.40 | 7 | | | | |
| 33235 | Pear Drop Stay 8" B/Wax | | | | | | |
| 33236 | Per Drop Fastener | | | | | | |
| 33237 | Fastener Hook B/Wax | 3.56 | 8 | | | | |
| 33240 | Hinge Fronts 18" B/Wax (pair) | 24.09 | | | | | |
| 33241 | Hinge Fronts 24" B/Wax (pair) | 25.30 | | | | | |
| 33244 | Locking Staple Pin B/Wax | 6.00 | | | | | |
| 33245 | Ring Door Knocker 5" P/Coated | 39.60 | | | | | |
| 33246 | Pear Door Knocker P/Coated | 35.20 | | | | | |
| 33247 | Tudor Lever Lock Set P/Coated | 50.60 | | | | | |
| 33248 | Hat & Coat Hook Waxed | 6.49 | | | | | |
| 33249 | Hat & Coat Hook P/Coated | 6.49 | | | | | |
| 33250 | Octagonal Mort/Rim Set P/Coated | 25.96 | | | | | |
| 33251 | Oval Mort/Rim Set P/Coated | 20.35 | | | | | |
| 33252 | Round Mort/Rim Set P/Coated | 20.35 | | | | | |
| 33253 | Heavy Bean Thumb Latch P/Coated | 31.42 | | | | | |
| 33254 | Oval Escutcheon & Cover P/Coated | 3.96 | | | | | |
| 33255 | Oval Escutcheon | 2.86 | | | | | |
| 33257 | H/Made HL Hinge 3 1/4" (pair) | 12.98 | | | | | |
| 33258 | Half Butterfly Hinge 2" x 2" (pair) | 11.88 | | | | | |
| 33259 | Half Butterfly Hinge 3 1/4" x 3 1/4" (pair) | 15.84 | | | | | |
| 33260 | H/Made H Hinge 3 1/4" (pair) | 11.88 | | | | | |
| 33269 | Gothic Euro Lev Lock Waxed 47 C/NT | 50.60 | | | | | |
| 33270 | Gothic Lever :Latch Set Waxed | 50.60 | | | | | |
| 33271 | Gothic Lever Lock Set Waxed | 50.60 | | | | | |
| 33275 | Gothic Lever Lock Latch Set P/Coated | 50.60 | | | | | |
| 33276 | Gothic Lever Lock Set P/Coated | 50.60 | | | | | |
| 33277 | Gothic Euro Lever 47 C/NT P/ Coated | 50.60 | | | | | |
| 33280 | Monkeytail Fast P/Coated | 8.50 | | | | | |
| 33281 | Monkeytail Stay 8" P/Coated | 8.68 | | | | | |
| 33282 | Monkeytail Stay 10" P/Coated | 9.60 | | | | | |
| 33283 | Monkeytail Stay 12" P/Coated | 10.62 | | | | | |
| 33284 | Fastener Hook P/Coated | 2.46 | | | | | |
| 33286 | 24" Hook & Band Hinge (pair) P/Coated | 70.40 | | | | | |
| 33287 | LKG M/T ESPAG RH P/Coated | 16.73 | | | | | |
| 33288 | LKG M/T ESPAG LH P/Coated | 16.73 | | | | | |
| 33290 | Pear Drop Fast P/Coated | 8.50 | | | | | |
| 33291 | Pear DropStay 8" P/Coated | 8.68 | | | | | |
| 33292 | Pear Drop Stay 10" P/Coated | 9.55 | | | | | |
| 33293 | Pear Drop Stay12" P/Coated | 10.62 | | | | | |
| 33296 | Privacy Latch Set B/Wax | 16.50 | | | | | |
| 33304 | H/Made Screw on Staple | 4.62 | | | | | |
| 33005 | Oak Box LCK & Octagonal Beeswax Knobs | 180.00 | | | | | |
| 33436 | Butt Hinge 3" (pair) | 4.36 | | | | | |
| 33437 | Butt Hinge 4" (pair) | 4.58 | | | | | |